



Boulder Creek near Boulder

EVALUATION:

- Content about right (100%) and Overall pace about right (100%)
- Almost unanimous increased knowledge of DSN and difference between Database and map (100%)
- SWAP was valuable and interesting across similar watersheds
- 10 out of 13 participants plan to upload data or where considering it, those that were not did not have date to upload or it was getting there already
- 8 of participants have legacy data to upload and 4 requested help

FREQUENCY:

- Many groups already communicate and swap needs, but they want to hear what other basins are doing
- Smaller scale is valuable, sharing is richer and better representation
- Many of our watersheds have sources from other basins
- If too large the SWAPs will loose meaning, have a large event and then smaller swaps
- Annual frequency, five years too long

South Platte Major Tribs, Longmont 4/19/2007

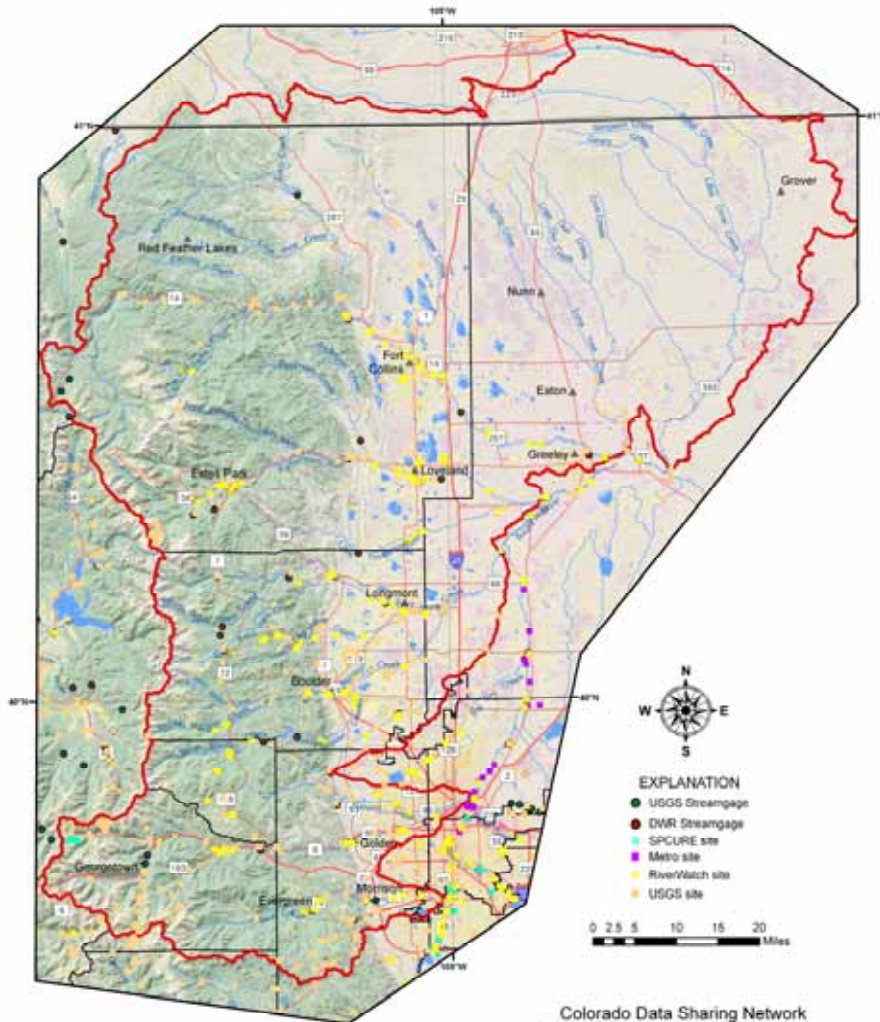
Expectations: *Folks came because they wanted to learn about DSN, how to get data in/out, how we are approaching this huge task of data sharing, to learn what about others monitoring activities, how to use DSN for measurable results, how to use this for data to information and reporting processes (data management key to that function), need to collaborate and share data, develop efficiencies, gather WS data versus their backyard, the need for information to develop TMDLs, to integrate and learn lessons from other systems.*

Watershed SWAP Priorities and Concerns:

- General observation is that there are many data generators and efforts to collaborate on most of the major tributaries. Generators include municipalities, watershed groups such as SPCURE, waste water treatment facilities, drinking water facilities, educational, volunteer organizations, state and federal government and private entities
- Data generated in the basin includes water chemistry, continuous temperature, macroinvertebrate, fish, phytoplankton, zooplankton, and physical habitat in streams, lakes/reservoirs and ground water
- Organizations have a need to share data to fulfill missions and need cost effective tools to implement
- Need to develop a way to manage algae, biological data, and continuous temperature data
- Need to get USGS data in a user friendly format to use for data analyses
- Priority to conduct trend analyses and observe changes in condition and determine impacts
- Need to integrate watershed data into strategy and policy making processes to protect and restore at county and state levels, cannot do alone need to collaborate
- Need to ensure consumer confidence against watershed degradation, supply security and contamination
- Priority is storm water management
- Want all data in Boulder and St Vrain Creeks for research and public education and to assist in policy development, desire to engage public in water protection and restoration by providing information
- Need to provide measurable results from BMP implementation
- Need to be able to assess where working and focus limited resources effectively
- Need to be able to translate technical information to the public
- Need a watershed plan for Boulder Creek, Middle and South Forks
- Need to more data to show changes in intake system, might need to address future nutrient standards
- Need to assess impacts from fires and other sources on system and to protect drinking water sources
- Need watershed plan for St Vrain Basin that integrates resources and doesn't duplicate other efforts
- Priority to do seasonal trending and trend analyses and changes in water quality through Longmont
- Priority E. coli monitoring to protect stream users in high use areas, long term trend analyses, spatial trends, addressing City of Denver's aging storm infrastructure and addressing the TMDLs
- We are a new collaborative monitoring group and need a way to manage our data that will serve our needs (data types, security, access, format, etc.) and grow with us.
- Requirement to get data into STORET, need to know DSN can do that
- Need for historical data to use in analyses
- Need to figure out how to get local water quality data into local decision making processes and policy as well as the state level
- Data quality is a concern, need to make sure quality is sufficient across sources and data duplication is addressed – historically an issue when centralizing datasets, need data generator to provide quality data when submit
- USGS has a water quality index that is useful to translate information to the public on condition, however, this uses 9 parameters and story is not as good if do not have all 9 parameters, could be a useful tool for story telling
- Need discharge or flow data whenever possible to help tell the stories, especially if load calculations are part of the issue or solution
- WQCD needs data, but in an adequate format for the right analytes plus discharge data

Who was invited?

Cherry Cr Basin WQ Authority
 Jefferson Co City of Longmont
 Trees Water & People
 New Consolidated Lower Boulder Reservoir & Ditch Co City of Loveland
 Cherry Creek Stewardship Partners
 Boxelder Sanitation District
 Louisville Bear Cr Water and Sanitation
 Evergreen Metropolitan District
 Black Hawk/Central City Sanitation District
 Cache La Poudre Water Users Assoc.
 Niwot Sanitation District
 Centennial Water Users' Assoc.
 City and County of Boulder
 District 6 Water Users Assoc.
 Westminster Utilities
 Underground Water Users Assoc.
 Fort Collins Utilities Loveland Utilities
 Platte River Power Authority
 Fort Collins Sanitation District
 Buckingham Irrigation Co
 Lafayette Evergreen
 Clover Basin Irrigation Co
 Consolidated Home Supply Ditch/Reservoir Co
 Longmont Utilities Larimer Co
 Consolidated Mutual Water
 City and County of Broomfield
 Daniels Sanitation District
 Highland Ditch Co Handy Ditch Co
 Pleasant View Water & Sanitation District
 City of Fort Collins Clear Creek Co
 Left Hand Ditch Co Lake Canal Co
 Fort Collins Lakewood
 Leyner-Cottonwood Consolidated Ditch
 New Cache La Poudre Irrig. Co
 New Coal Ridge Ditch Co
 North Poudre Irrigation Co
 Plumb & Dailey Ditch Co
 Left Hand WS Oversight Group
 Rural Ditch Co Boulder WASH
 Smith & Emmons Ditch Co
 Boulder Creek Initiative
 Water Supply & Storage Co
 Friends of the Poudre City of Westminster
 Cherry Creek Valley Water & Sanitation District
 East Larimer County Water District
 Clear Cr WSG-UCCWAG
 Fort Collins-Loveland Water District
 Friends of Bear Creek
 Estes Park Golden
 Big Thompson Colorado Conservation District
 Pine Brook Water District
 Boulder Valley CO Cons Dist.
 City Blackhawk Water Dept
 Douglas CO Cons District
 East Adams CO Cons District
 Fort Collins CO Cons District
 St Vrain & Left Hand Water Conservancy District
 Big Thompson Ditch & Mfg. Company
 Boulder/White Rock Ditch & Reservoir Co
 Town of Lyons Town of Niwot
 Little Thompson Water District
 City of Idaho Springs Town of Erie
 Chatfield Basin Authority/ Bear Creek WS Assoc.
 Larimer County Environmental Health Services
 Northern WCD Trout Unlimited



Middle South Platte Tribes Watershed

Colorado Data Sharing Network
 Middle South Platte Tribes Data Swap
 April 19, 2007 Longmont, Colorado


Who attended?

Rebecca Anthony, CDPHE WQCD
 Jim Shelley, City of Boulder Water Quality
 Andre Rowlett, Boxelder Sanitation District
 Eric Petersen, Kodak Colorado Division
 Brendan Matthew, Kodak
 Mary Jane Paterniti, City of Longmont
 Mark Williams, Boulder County Health Department
 Jon Novick, Denver Dept of Environmental Health
 Sheila Murphy, USGS
 Jeffrey Boring, Big Thompson Watershed Forum
 Jason Grahm, City of Ft. Collins
 Esther Vincent, Northern WCD
 Jana Watson-Capps, Sand Creek
 Regional Greenway
 Dan Mathes, City of Louisville
 Jerald Walker, City of Louisville
 Paul Bremser, City of Louisville
 Larry Wyeno, City of Longmont
 Jim Waterman, Basin.org
 Jen Stephenson, City of Greeley
 Deb Entwistle, USFS

Who was missing?

BOR and BLM, Federal agencies
 Left Hand Water District, Kathy Peterson
 State and National Park Service
 City of Estes Park, Erie (Joe Cleffner) and Lafayette (Mark Hartman, Mic Forester)
 Denver Tech Center Devine Libbermand
 CSM – Junco Marr, CSU - Doug Price,
 Jim Walkers CU – Bill Lewis, Jimmy
 McHutch, Diane McKnight, Joe Ryan
 Open Space Groups

Sponsors

