



Cherry Creek bike path through downtown Denver

## Middle South Platte, Golden

4/18/2007

**Expectations:** *Folks came because they had a need to share their data and learn about others data needs and monitoring activities, learn about the DSN project and how to get data in or out of the system and to learn how to access more data for their work.*

### Watershed SWAP Priorities and Concerns:

#### EVALUATION:

- Content about right (100%) and Overall pace about right (100%)
- Almost unanimous increased knowledge of DSN and difference between Database and map (92%)
- SWAP was more interesting than I thought it would be
- 10 out of 12 participants plan to upload data or where considering it, those that were not did not have date to upload
- 7 of 12 participants have legacy data to upload and 6 requested help loading data into DSN

#### FREQUENCY:

- Frequency ranged from 6 months, one year and 2-3 years
- Need to do data calls every 6 months to a year at minimum
- Topics – current issues where data policy meet in addition to field type issues, monitoring issues, data management and analyses issues, tips

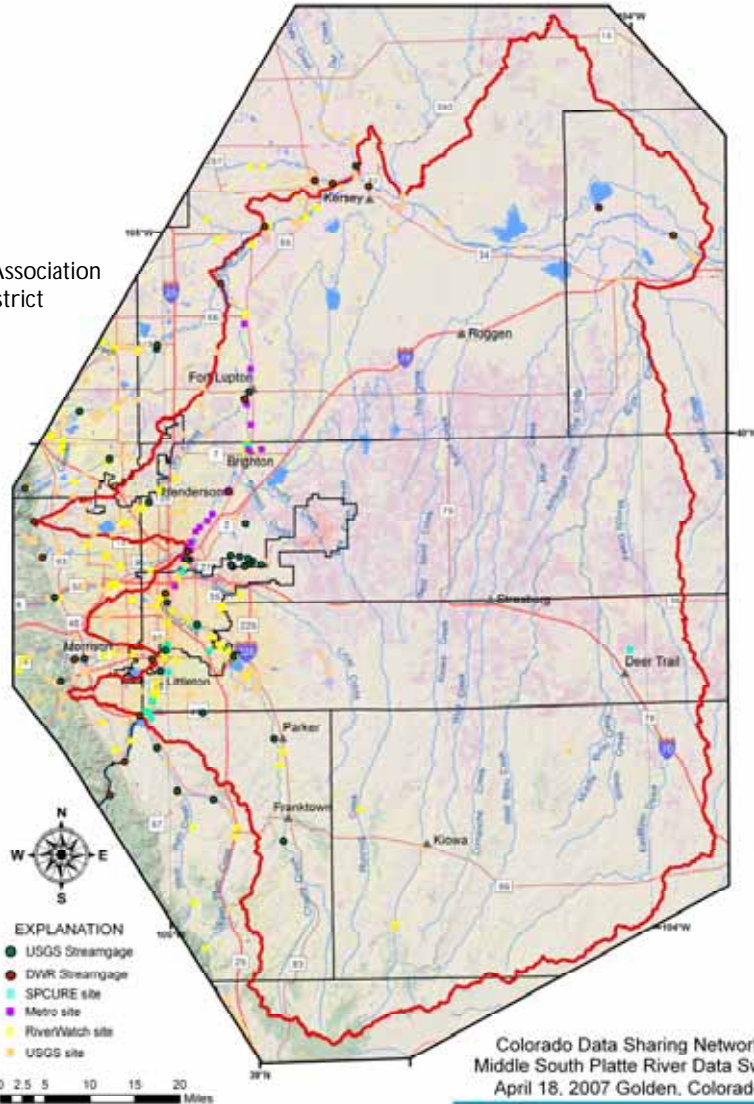
- General observation is that there are many data generators and users on the Mainstem South Platte. Generators include municipalities, watershed groups such as SPCURE, waste water treatment facilities, drinking water facilities, educational, volunteer organizations, state and federal government and private entities
- Data generated in the basin includes water chemistry, continuous temperature, macroinvertebrate, fish, phytoplankton, zooplankton, and physical habitat in streams, lakes/reservoirs and ground water
- Need to get what they generate out to more users to achieve their mission, their mandate
- Need temperature, nitrogen-ammonia type data for plant operations, how important is everyday monitoring of these things or not?
- Need data to review and help focus decision-making discussions, such as permitting, anti-degradation and regulations
- Regulatory processes drove many of the groups monitoring priorities, such as permitting, triennial reviews, control regulations and TMDLs, but not all
- Multiple organizations had a need to identify nutrient loading sources to their water body, such as nitrates to wells and spikes of selenium in Segment 15
- Concern their organization can't monitor everything, everywhere all the time, already look at 36 miles of river, the need to collaborate to have quality comprehensive data for all entities is critical
- Changing uses, changes in water quantity diversions and exchanges all these are moving targets in the data to information task of monitoring and assessment, hard to do
- Need to start gathering fish tissue information
- Required to upload data to STORET
- Would like to see electronic submission of DMR (discharge monthly reports), would be easier to manage that information and getting that information to more users would be easier
- When we do try and combine data sets, duplicity is one of the issues to deal with, to combine like stations and or make sure literal duplicates not in data set
- Need ability to use DSN tools to share data more effectively among users as well as with the public and save resources on "data calling" for higher level tasks
- Reservoirs in the area need to keep cyanobacteria under control and all have efforts to limit stratification
- Better connection with efforts outside our immediate watershed, for example phosphorus is an issue and Cherry Cr Res is an upstream source so need quality information from them, *E. coli* and nitrate are issues in Segment 14, need to collaborate with tributaries
- Concern that the WQCD is always short on data for decision making processes, decision are better with data, desire to access the most data possible
- Need to be able to get data for initial condition stream assessments to then be able to measure impact from restoration or other efforts, but in a format that is useable
- Erosion, sediment control and road impacts are a priority on forest service land, from all sources, many of which are private
- Need to understand their management of the Forest effect on aquatic life and how to regulate the urban recreation forest interface
- Providing drinking water was a priority for municipalities
- Excited to help figure out how this project will help local decision makers and data users to tell their stories and protect /restore rivers
- Need for decisions to be as scientifically sound as possible, which requires quality data is being generated and access to that, DSN can play a large role
- Need to be able to tell story at different levels, TMDLs are by segment or portion of segment WBID versus watershed assessments, need to be able to use data for both if can

## Who attended?

Matt Sares, Colorado Geological Survey  
 Tanya Bayha, Metro WRD  
 Mary Gardner, Littleton/Englewood WWTP  
 Craig Wolf, GEI Consultants, Inc  
 Greg Moore, City of Golden  
 Britney Hand, City of Thornton  
 Alice Wood, Barr Lake & Milton Reservoir Watershed Association  
 Stephen Ellis, South Adams County Water Sanitation District  
 Theresa Savery, USFS Arapaho-Roosevelt NF  
 Alan Polonsky, Denver Environmental Health  
 Erik Oerter, Colorado Geologic Survey  
 John Hranac, CDPHE WQCD  
 Carrie Powers, Felsburg Holt & Vlerig

## Who was invited?

Aurora  
 Englewood 319 NPS Council  
 Northglenn Tri State  
 CO Dept Ag, Soil Conservation Board  
 Park County Water & Trust Fund Board  
 Castle Rock Littleton  
 Budweiser Arvada  
 Commerce City DIA  
 Martin Marietta Xcel Energy  
 Wheatridge Greeley  
 CO Watershed Assembly  
 Sand Cr WSG  
 AWARE Colorado  
 Colorado Water Trust  
 URS Corporation Water Resources  
 Center for Water Education  
 Brighton Federal Heights  
 Windsor Aurora Utilities Department  
 Colorado Environmental Coalition  
 Earth Justice Legal Defense Fund  
 Littleton/Englewood WWTP  
 Centennial Glendale  
 Platte Canyon Water & Sanitation Dist  
 Ft LuptonPlum Creek  
 WW Authority  
 South Adams County Water & Sanitation  
 Platteville Gilcrest  
 Northglenn Utilities  
 Centennial Water & Sanitation District  
 Johnstown  
 Greeley Water Pollution Control Facility  
 Berthoud Dacono  
 Town of Milliken  
 Arapahoe County Water and  
 Wastewater Authority  
 Adams County  
 Barr /Milton Thornton  
 Arapahoe County  
 Water Utility Council  
 Douglas County  
 Metropolitan Wastewater Reclamation  
 District  
 Storm Water Council



Middle South Platte Watershed



## Who was missing?

University of Colorado, Dr. Joe Ryan, Dr. Mark Williams, Dr. Diane Mcknight (Dr. Bill Lewis was invited, Dr. Joe Ryan via Left Hand WS)  
 Farmers Reservoir and Irrigation Co, Henry Lynn Irrigation Co (FRICO chose to be represented by SPCURE)  
 James Cr WS and Left Hand WS (Both were represented at 4.19.07 event)  
 International Erosion Control  
 Colorado Stormwater Council (They have representation on the DSN TAC)  
 Colorado Department of Highways (were invited via NPS Council)  
 Pike and Arapahoe National Forest, Data Guru Jeff Sortike

## Sponsors

### Event Sponsors



### Basin Sponsors

