



Arkansas Headwaters
Recreational Area

EVALUATION:

- Content about right and Overall pace about right
- Unanimous increased knowledge of DSN and difference between Database and map
- Good project, good discussions, great for public, today's participation bias towards municipalities but see potential
- 33% will upload data to database, 22% will not-no data, remaining uncertain about their data types or other issues, 37% of those that will upload to database requested help
- two felt appropriate to load data on map versus database
- Group desire to have WQCD data in database some day understanding the hurdles now

FREQUENCY:

- Can see how this would increase in value with more data sharing efforts
- Frequency every few years following WQCD cycle makes sense.
- Scale is accurate
- Future topic presentation on existing and new TMDL implementation efforts
- Future topic Presentation of completed studies

Arkansas Front Range, Pueblo 4/23/2008

Expectations: *The majority of folks came to see what information exists and how to share what they are generating or doing. Some came just to learn what others are doing regarding water quality and how to work better in the watershed approach. Most wanted to understand what the DSN project was figure out their role, and to get or provide data, including 208 planning data. One entity was there to see how information provided might help guide Senator Salazar's policies. Some desired efforts to be elevated beyond the data (multiple datasets) to solutions and see DSN helping. Some involve with water quantity management, tamarisk and salinity issues and wanted to see how this fits with those efforts. All came to increase their knowledge and awareness.*

Watershed SWAP Priorities and Concerns:

- At least ½ of participants generated data, maybe for water treatment, waste water treatment, special studies, surface and ground water, all media and a variety of indicators chemical, physical and biological.
- Municipalities had mechanism to share data via consumer reports or other joint efforts
- The USGS is heavily involved in routine and special studies for the Middle to Lower Arkansas basins
- An ongoing comprehensive (time, watershed & indicators) quality data base to help address current and future water quality issues such as selenium and nutrient criteria
- Time spent providing data requests reduced with a system such as this
- Pueblo Board of Water Works provides consumer confidence reports at www.pueblowater.org.
- Needs are to be able to meet all requirements of the Safe Drinking Water Act
- Ecoli is a primary concern on Fountain Creek, especially upper portion. Issues include source identification, human/animal, failing septic or infrastructure and the like. Goal is to fix all issues to get delisted versus develop and implement a TMDL
- Concern that outcome of ecoli issues may result in expensive compliance issues that may or may not address the problem. Extent is not understood yet
- The regions 208 plan is our priority; need to have as much data as possible, 303d listed segment scale
- Sediment in Fountain Creek - need to have more and better methods to deal with this issue
- To get a comprehensive view of USGS activities in basin, go to their website. Work includes quantity and quality, water transfers, modeling, biological, emerging contaminants, etc. Most data is available via NWIS, the USGS database. Desire to coordinate with this project to leverage their work and be more effective.
- Need for data because cannot generate ourselves, but then concern about quality of data available
- Priority to eradicate tamarisks and Russian olives, finishing the plan and approach, scope includes Salida to state line, where 80% of these species in Colorado reside.
- Need data to issue effective permits, especially for wetlands
- Needs require an odd balance of quantity and quality issue juggling to deal with growth and limited resources and provide quality water for citizens in city and downstream. Do not want to invent the wheel so need to leverage what others have done, especially have the need for modeling capacity of the ModSim variety. Nitrates a concern.
- Need third party data to implement the Clean Water Act, need it when we are focusing on this basin, recent data and if possible all in the same format, with the quality characterized. This reduces mistakes made in analyses and saves a tremendous amount of time.
- Need for coordination from external entities and in house among the different units, functions and individuals you may contact or give data too, your data is needed in many WQCD unit functions.
- Concern watch how temperature standards are getting adopted
- Need for WQCD data to be in DSN or at least on map.
- Fountain Creek Visionary Task Force, collects no data but needs it all for their efforts.
- Need to document existing water quality conditions for water quantity work, using others data.

Sponsors



Colorado Data Sharing Network in Review: The Arkansas & Rio Grande Basins ~ Ark Front Range

Who attended?

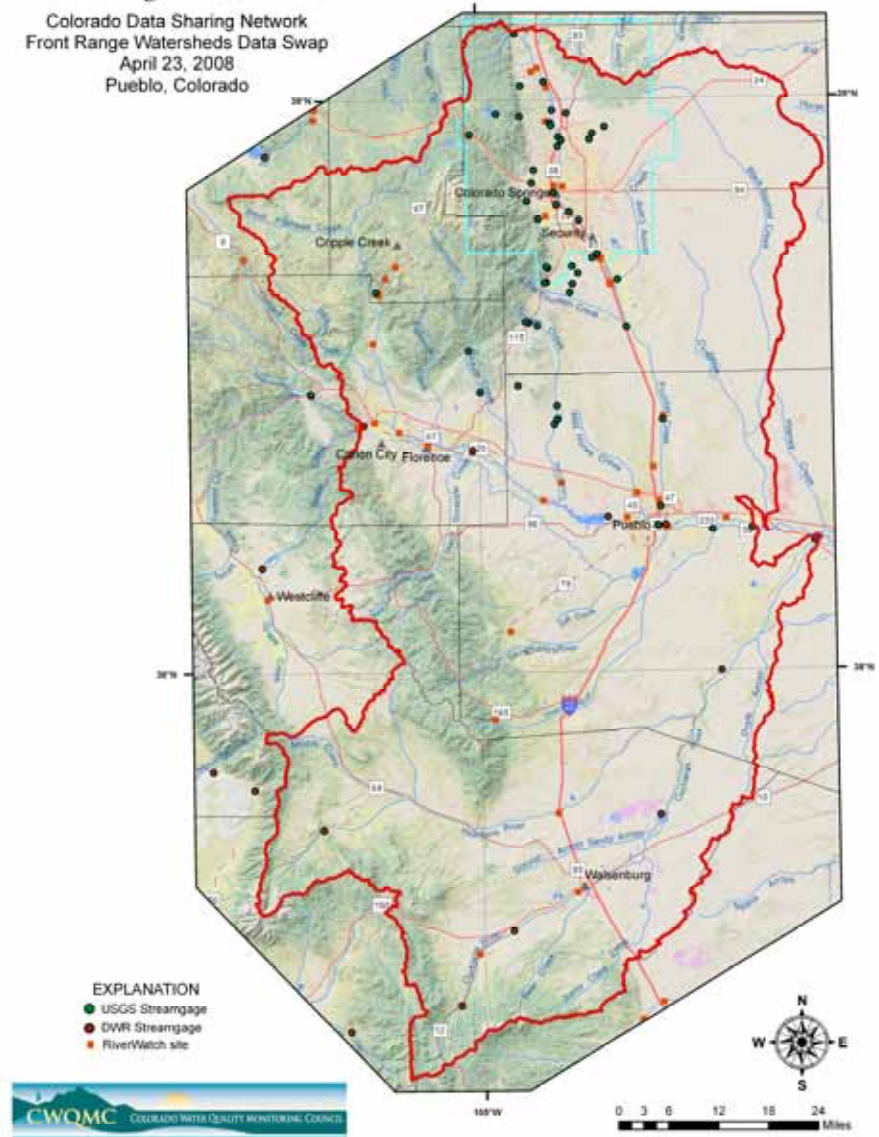
Aimee Konwal - WOCD
 Annie Oatman-Gardner
 US Senator Ken Salazar
 Barbara Dallemand - El Paso County
 Chad Wolgram
 Pueblo City-County Health Dept
 Conde Benoist - City of Pueblo
 Dave Olsen
 Association of Conservation Districts
 David Mau - USGS
 Janet Dash
 Division of Water Resources
 Jeff Farley
 Pueblo Board of Water Works
 Jerry Cordova - City of Fountain
 Margie Medina
 South East Colorado Water
 Conservancy District
 Nancy Keller - City of Pueblo
 Rich Muzzy
 Pikes Peak Area COG
 Scott Cowan
 Pueblo City-County Health Dept
 Tamara Ivahnenko - USGS
 Tracy Kosloff - MWH
 Van Truan
 US Army Corps of Engineers

Who was missing?

Rocky Mountain Steel Mill
 Military. US airforce Academy
 Colorado Springs Power Plants
 CACD
 Sierra Club
 Roundtables
 Pikes Peak and El Paso Water Authority
 Co. Springs stormwater enterprise
 Colorado College
 National Park Service.
 Hazardous Materials
 Pueblo West
 Upper black squirrel ground water
 management association
 Protect our wells
 Fountain creek restoration
 El Paso County water authority
 Cattleman's Association
 Avondale source water protection
 CSU Pueblo, Scott Herman
 Sierra Club Water Sentenils
 Tim Gates & Louis Garcia, , CSU
 Steve Miller, CWCB
 Javis Danielson, Purgatoire River Water
 Conservancy District

Front Range Watersheds

Colorado Data Sharing Network
 Front Range Watersheds Data Swap
 April 23, 2008
 Pueblo, Colorado



Who was invited?

AQUILA
 Arkansas River Compact
 Administration
 ASARCO
 Beaver Park Water Inc.
 BLM Canon city dist. Office
 Board of Water Works of
 Pueblo
 Bureau of Land Management
 Bureau of Reclamation
 City of Aurora
 City of Fountain
 City of Pueblo
 CO Springs Utilities Water
 Res.

Colorado Association of
 Conservation Dist.
 Colorado Dept. Of Health
 Division of Water Resources
 El Paso County
 Fremont Cattleman's
 Association
 Fremont Conservation
 District
 Fremont County
 MWH Americas, Inc.
 Pikes Peak Area Council of
 Governments
 Pueblo Board of Water
 Works

Pueblo City-County Health
 Department
 Southeastern CO Water
 Cons. Dist.
 Spanish Peaks-Purgatorie
 River Conservation
 U.S. Army Corps of
 engineering
 University of Southern
 Colorado
 Upper Arkansas Area COG
 US Army Corps of Engineers
 US Senator Ken Salazar
 USGS

Map created by and
 donated from USGS

